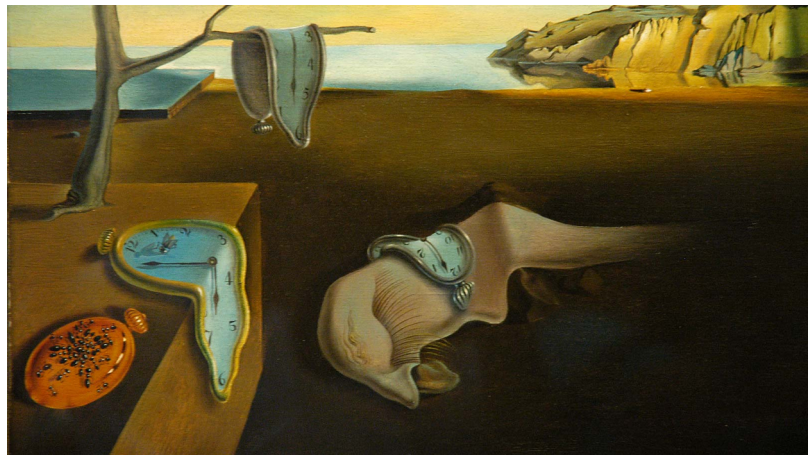


ART HISTORY - SURREALISM



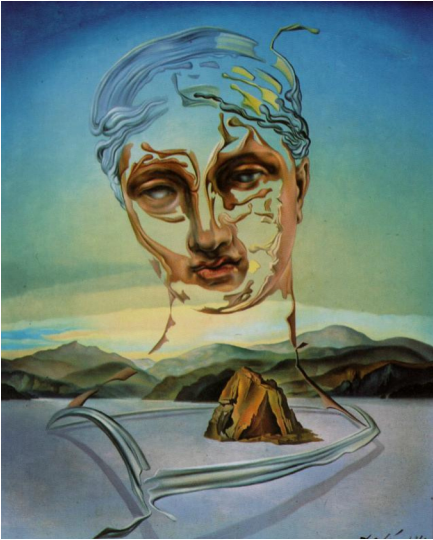
ESSENTIAL KNOWLEDGE

- Surrealism was an art and cultural movement which began in the early 1920s
- The movement grew out of Dadaism
- This was, amid the horrors of World War I, a protest at the meaninglessness of civilised life
- At the same time, the work of Sigmund Freud began to filter through, and affect the literary and art worlds
- Freud's work placed emphasis on the subconscious mind, and its role in steering behaviour and emotion
- His way of dream analysis to get a clue to the subconscious was picked up by the surrealists.
- They painted dreamlike fantasies

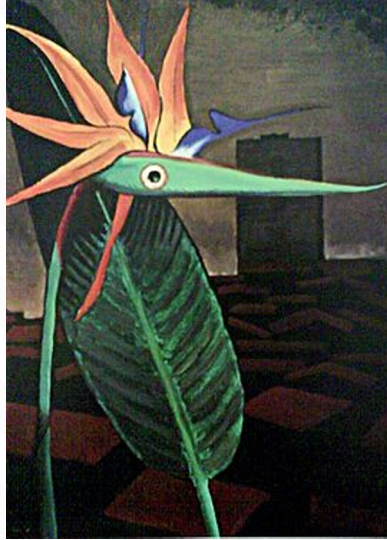
**'SURREALISM IS
DESTRUCTIVE, BUT
IT DESTROYS ONLY
WHAT IT CONSIDERS
TO BE SHACKLES
LIMITING OUR
VISION.'**

Salvador Dalí

KEY ARTISTS AND IDEAS



Salvador Dalí



Man Ray



André Masson

SALVADOR DALÍ

Dalí's expansive artistic repertoire included film, sculpture, and photography, at times in collaboration with a range of artists in a variety of media

MAN RAY

American visual artist who spent most of his career in Paris. He was a significant contributor to the Dada and Surrealist movements, although his ties to each were informal

ANDRÉ MASSON

His early works display an interest in cubism. He later became associated with surrealism, and he was one of the most enthusiastic employers of automatic drawing, making a number of automatic works in pen and ink

CONTEMPORARY ARTIST - NOEL FIELDING

- English comedian, writer, actor, artist, musician, and television presenter
- He held his first exhibition, entitled Psychedelic Dreams of the Jelly Fox, at Maison Bertaux, a patisserie in Greek Street, Soho in early 2008
- He has stated that he has been heavily influenced by the works of Salvador Dalí
- In October 2011, Fielding released an art book called Scribblings of a Madcap Shambleton

