

COLOUR BLOCKING - TOMASZ MRO



Tomasz Mrozkiewicz, known as Tomasz Mro, is an illustrator based in England, who creates colourful illustrations filled with mystery and despair.

HOW TO DO IT

- Choose the image you want to use - a portrait works best in Black & White.
- Use a lightbox or tracing paper to help sketch your guidelines
- Create a high quality tonal portrait of the face.
- Lightly sketch the outline of the hair and clothes.
- Use a bold colour to 'block' the areas of hair and clothes.
- Be very careful to stay away from the areas of tonal drawing.
- Inks work well, but you could use watercolour, coloured pencils or good quality coloured pens.
- Think about carefully edging your tonal drawing in a dark line.

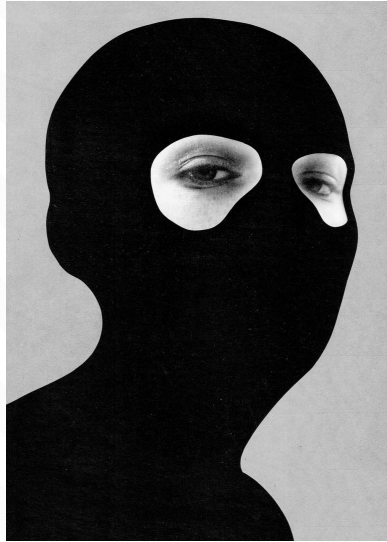
**'I ENJOY
EXPERIMENTING
BY COMBINING
DIGITAL
ADJUSTMENTS
WITH SOME OF
MY TRADITIONAL
ILLUSTRATIONS.'**

Tomasz Mro

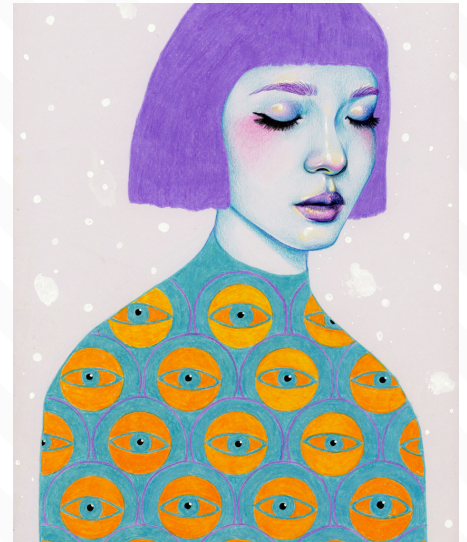
FURTHER RESEARCH AND KEY WORDS



Sacrée Frangine



Jesse Draxler



Natalie Foss

SACRÉE FRANGINE

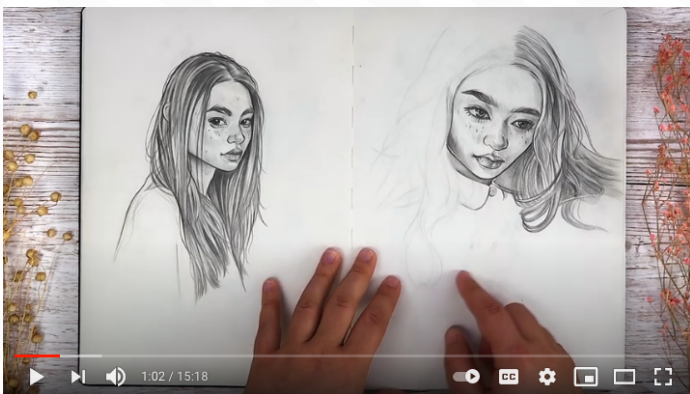
In 2016, Sacrée Frangine was born; an artistic project that aims to tell the female world through colorful and minimal illustrations.

JESSE DRAXLER

Mixed media and multidisciplinary artist, and his pieces combine painting, photography, collage, typography and digital painting. Among their characteristics are distorting the human form, working in grayscale, and abstract landscapes.

NATALIE FOSS

Works in different fields, from personal projects to commercial commissions. Her drawings mix the flat, almost graphic, with the 3-dimensional and detailed - often portraying alienated beings adorned by 60s/70s inspired patterns and motifs.



Click the image above or visit:
<https://www.youtube.com/watch?v=GXDooWZHMxU>

LIGHTBOX

A flat box having a side of translucent glass or plastic and containing an electric light; used to help with tracing.

ILLUSTRATOR

A person who draws or creates pictures for magazines, books, advertising, etc.